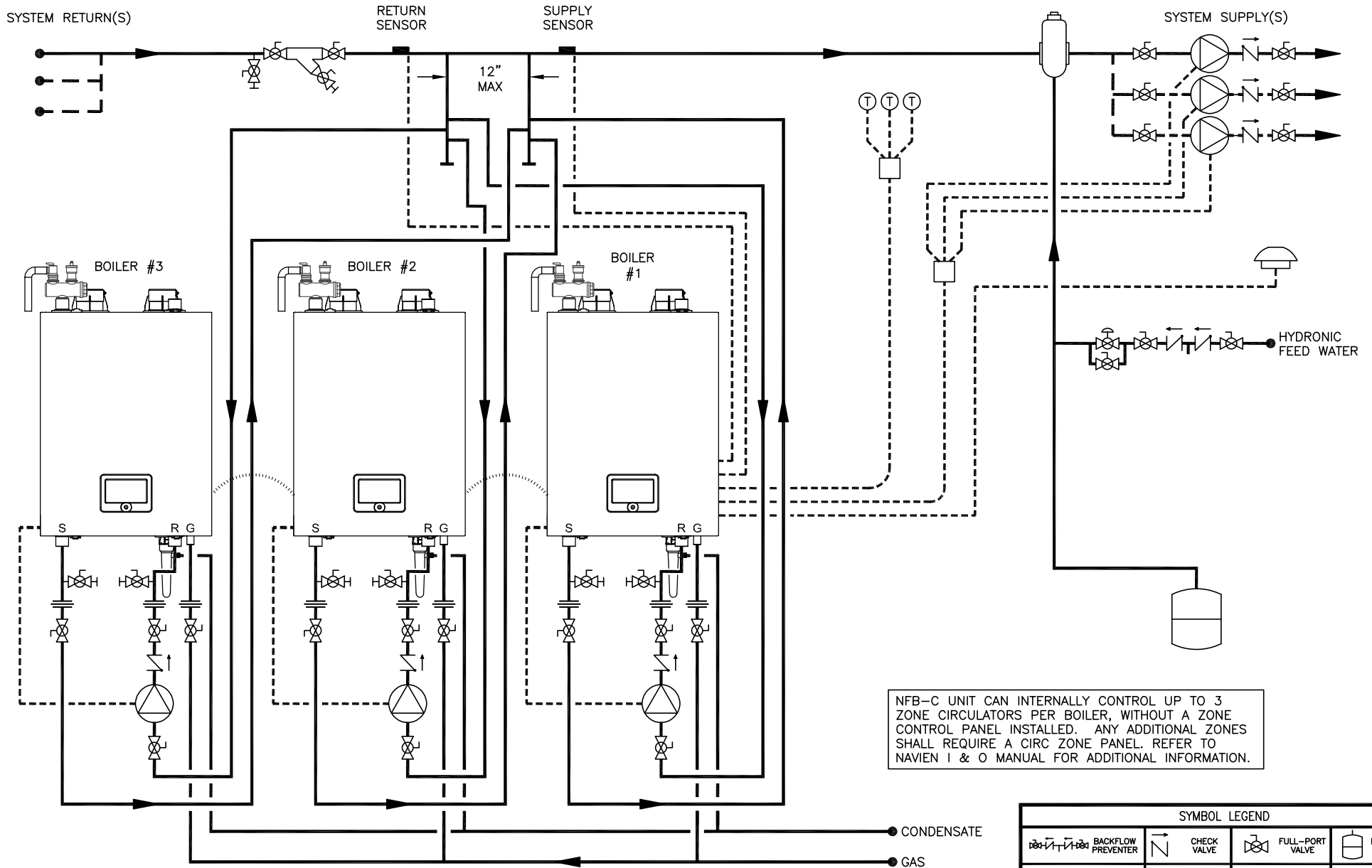


THIS DRAWING IS INTENDED ONLY AS A GUIDE AND NOT AS A REPLACEMENT FOR PROFESSIONALLY ENGINEERED PROJECT DRAWINGS. THIS CONCEPT SYSTEM DRAWING DOES NOT IMPLY COMPLIANCE WITH LOCAL BUILDING CODES. ACTUAL INSTALLATION MAY VARY DEPENDING ON INSTALLATION LOCATION AND PARAMETERS AND IT MUST BE DONE IN ACCORDANCE TO ALL LOCAL BUILDING CODES. VERIFY WITH LOCAL BUILDINGS OFFICIALS BEFORE COMMENCEMENT OF SYSTEM INSTALLATION. CHANGES OR MODIFICATIONS TO PIPING OR DESIGN IS NOT TO BE PERFORMED WITHOUT EXPRESSED WRITTEN PERMISSION BY NAVIEN, INC.

**RECOMMENDED SYSTEM & HEADER PIPE SIZES – TOTAL BTU (>4 FT/SEC.)**

- 1-1/2" – UP TO 301,000 BTU'S (1 BOILER)
- 2" – 399,000 BTU'S (1 BOILER)
- 2-1/2" – 601,000 TO 798,000 BTU'S (2 BOILERS)
- 3" – 903,000 TO 1,197,000 BTU'S (3 BOILERS)
- 4" – 1,204,000 TO 3,192,000 BTU'S (4 TO 8 BOILERS)



| SYMBOL LEGEND |                            |  |                       |
|---------------|----------------------------|--|-----------------------|
|               | BACKFLOW PREVENTER         |  | CHECK VALVE           |
|               | FULL-PORT VALVE            |  | EXPANSION TANK        |
|               | CONTROL WIRING             |  | PRESSURE RELIEF VALVE |
|               | CIRCULATOR                 |  | THERMOSTAT            |
|               | CONDENSATE TRAP            |  | BOILER RELIEF VALVE   |
|               | OUTDOOR TEMPERATURE SENSOR |  | BALL DRAIN VALVE      |
|               | WYE STRAINER W/ BLOWDOWN   |  | AUTOMATIC AIR VENT    |
|               | UNION                      |  | CASCADE CABLE         |
|               | PRESSURE REDUCING VALVE    |  |                       |



20 GOODYEAR  
IRVINE, CA 92618  
800-519-8794  
www.navienc.com

NFB-C SERIES BOILER

(3) NFB-C CONDENSING BOILERS WITH  
INDIVIDUAL SECONDARY INJECTION PIPING  
INCLUDES MODELS NFB-301C, 399C

DRAWN BY: S. STOKE

NFB-C-3-ZP-MULT-I

JUNE 6, 2022