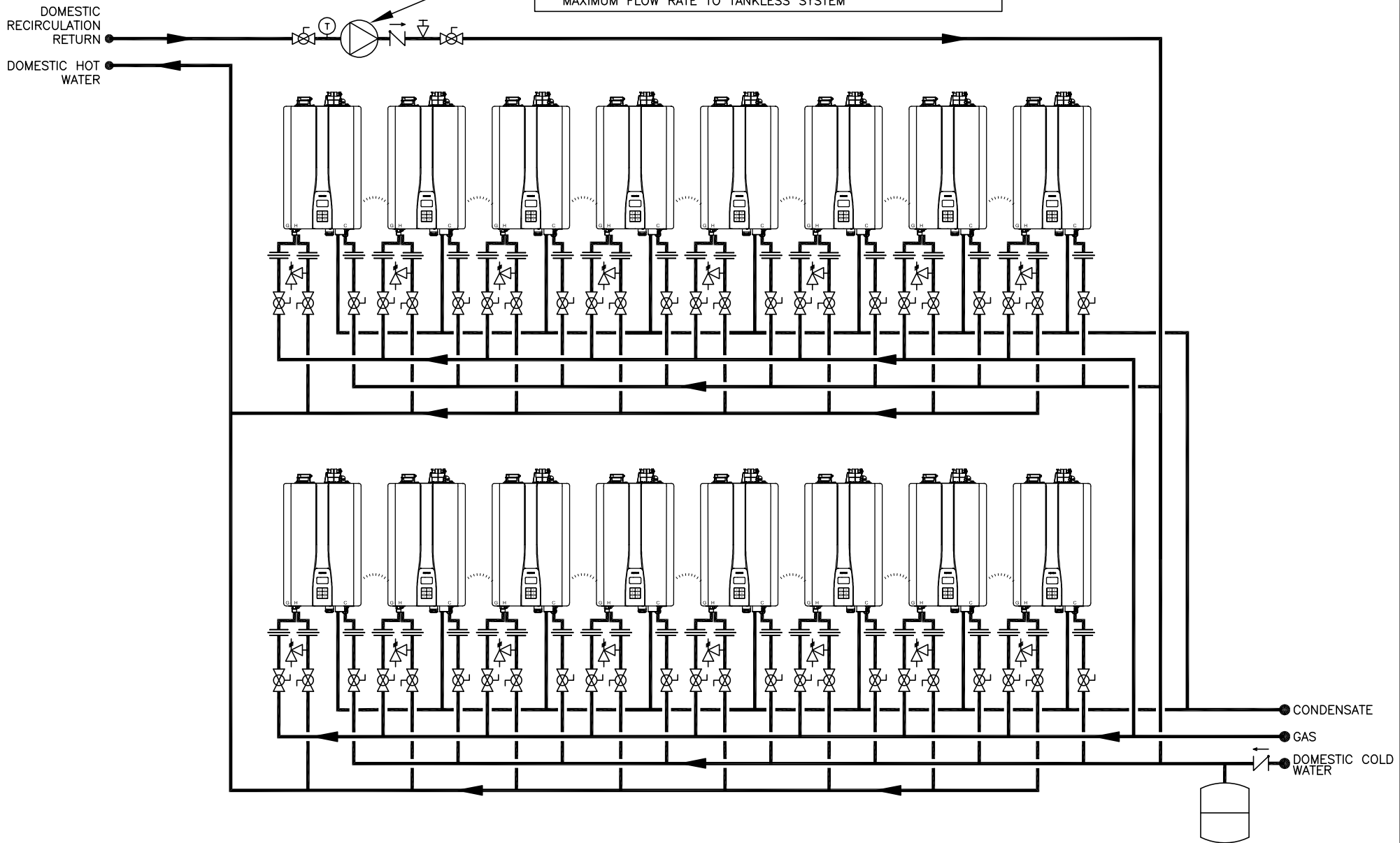


THIS DRAWING IS INTENDED ONLY AS A GUIDE AND NOT AS A REPLACEMENT FOR PROFESSIONALLY ENGINEERED PROJECT DRAWINGS. THIS CONCEPT SYSTEM DRAWING DOES NOT IMPLY COMPLIANCE WITH LOCAL BUILDING CODES. ACTUAL INSTALLATION MAY VARY DEPENDING ON INSTALLATION LOCATION AND PARAMETERS AND IT MUST BE DONE IN ACCORDANCE TO ALL LOCAL BUILDING CODES. VERIFY WITH LOCAL BUILDINGS OFFICIALS BEFORE COMMENCEMENT OF SYSTEM INSTALLATION. CHANGES OR MODIFICATIONS TO PIPING OR DESIGN IS NOT TO BE PERFORMED WITHOUT EXPRESSED WRITTEN PERMISSION BY NAVIEN, INC.

SELECT EXTERNAL CIRCULATOR PERFORMANCE TO BE 2 GPM MINIMUM, 3 GPM MAXIMUM PER TANKLESS BASED ON 11 PSI PRESSURE DROP AT 3 GPM PER TANKLESS, PLUS EXTERNAL BUILDING PIPE, VALVES AND FITTINGS TO ASCERTAIN TOTAL CIRCULATOR PUMP REQUIREMENTS

- CIRCUIT SETTER AT EXTERNAL PUMP IS REQUIRED FOR SETTING MAXIMUM FLOW RATE TO TANKLESS SYSTEM



TANKLESS QUANTITY: RECOMMENDED PIPE SIZE

1 UNIT: 3/4" 2 UNITS: 1" 3 UNITS: 1-1/4" 4-5 UNITS: 1-1/2" 6-8 UNITS: 2" 9-14 UNITS: 2-1/2" 15-16 UNITS: 3"

SYMBOL LEGEND



20 GOODYEAR
IRVINE, CA 92618
800-519-8794
www.navieninc.com

NPE-S2 SERIES TANKLESS WATER HEATER

(16) NPE-S2 TANKLESS WATER HEATERS
WITH EXTERNAL RECIRCULATION PUMP
INCLUDES MODELS 150, 180, 210 AND 240

	UNION		CHECK VALVE		FULL-PORT VALVE		AQUASTAT
	DHW CIRCULATOR W/ AQUASTAT OPTIONAL TIMER & CHECK VALVE		PRESSURE RELIEF VALVE		CIRCULATOR		EXPANSION TANK
	CASCADE CABLE		BALANCING VALVE				

DRAWN BY: S. STOEKE

NPE-S2-16-EC

JUNE 1, 2023